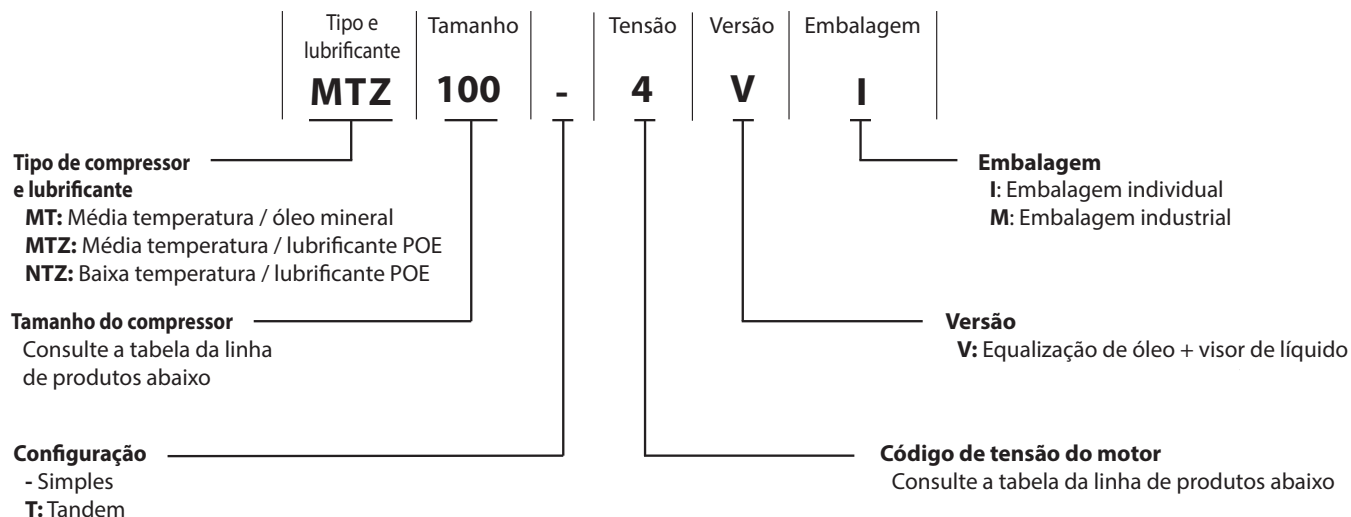
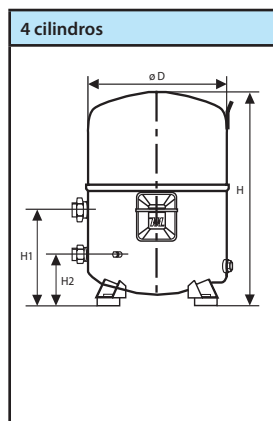
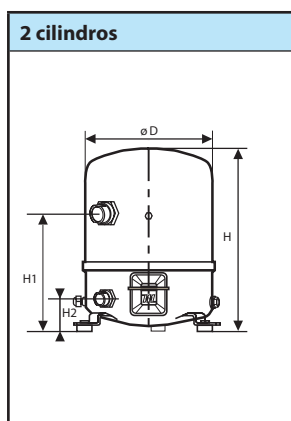
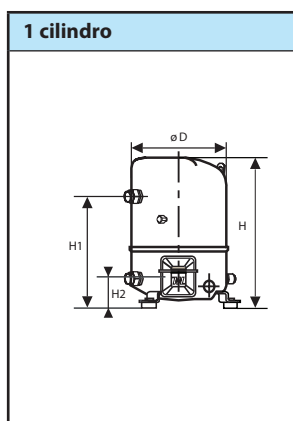


Nomenclatura



Códigos para pedidos

		Tensão nominal				Altura			Diâmetro
		230/1/60	230/3/60	400/3/50 460/3/60	380/3/60	H	H1	H2	P
Aplicações M+HBP	Modelo	Código de tensão do motor				mm			
		1	3	4	9				
	MT/MTZ 019	MT/MTZ19-1VM	MT/MTZ19-3VM	MT/MTZ19-4VM	-	333	263	68	224
	MT/MTZ 022	MT/MTZ22-1VM	MT/MTZ22-3VM	MT/MTZ22-4VM	MT/MTZ22-9VM				
	MT/MTZ 028	MT/MTZ28-1VM	MT/MTZ28-3VM	MT/MTZ28-4VM	MT/MTZ28-9VM				
	MT/MTZ 032	MT/MTZ32-1VM	MT/MTZ32-3VM	MT/MTZ32-4VM	MT/MTZ32-9VM	356	263	68	224
	MT/MTZ 036	MT/MTZ36-1VM	MT/MTZ36-3VM	MT/MTZ36-4VM	MT/MTZ36-9VM				
	MT/MTZ 040	MT/MTZ40-1VM	MT/MTZ40-3VM	MT/MTZ40-4VM	-				
	MT/MTZ 044	MT/MTZ44-1VM	MT/MTZ44-3VM	MT/MTZ44-4VM	MT/MTZ44-9VM	413	265	74	288
	MT/MTZ 050	MT/MTZ50-1VM	MT/MTZ50-3VM	MT/MTZ50-4VM	MT/MTZ50-9VM				
	MT/MTZ 056	MT/MTZ56-1VM	MT/MTZ56-3VM	MT/MTZ56-4VM	MT/MTZ56-9VM				
	MT/MTZ 064	MT/MTZ64-1VM	MT/MTZ64-3VM	MT/MTZ64-4VM	MT/MTZ64-9VM				
	MT/MTZ 072	-	MT/MTZ72-3VM	MT/MTZ72-4VM	MT/MTZ72-9VM				
	MT/MTZ 080	-	MT/MTZ80-3VM	MT/MTZ80-4VM	MT/MTZ80-9VM				
	MT/MTZ 100	-	MT/MTZ100-3VM	MT/MTZ100-4VM	MT/MTZ100-9VM	519	233	125	352
	MT/MTZ 125	-	MT/MTZ125-3VM	MT/MTZ125-4VM	MT/MTZ125-9VM				
	MT/MTZ 144	-	MT/MTZ144-3VM	MT/MTZ144-4VM	MT/MTZ144-9VM				
	MT/MTZ 160	-	MT/MTZ160-3VM	MT/MTZ160-4VM	MT/MTZ160-9VM				



Compressores herméticos · MT · R22

Modelo	T.E.	+15			+10			+5			0		-5		-10		-15		-20	
	T.C.	C.R.	P.C.	C.R.	P.C.	C.R.	P.C.	C.R.	P.C.	C.R.	P.C.	C.R.	P.C.	C.R.	P.C.	C.R.	P.C.	C.R.	P.C.	
MT 019	35	7442	1.3	6012	1.4	4786	1.3	3745	1.3	2875	1.2	2155	1.1	1572	1.0	1104	0.9			
	45	6462	1.6	5180	1.6	4087	1.5	3168	1.4	2404	1.3	1779	1.2	1274	1.1	873	0.9			
	55	5407	1.9	4288	1.8	3346	1.7	2562	1.6	1922	1.4	1405	1.3	-	-	-	-			
MT 022	35	9400	1.8	7802	1.8	6391	1.8	5153	1.7	4073	1.6	3139	1.4	2340	1.3	1658	1.1			
	45	8264	2.1	6806	2.1	5520	2.0	4394	1.9	3416	1.7	2572	1.5	1848	1.3	1230	1.1			
	55	7037	2.4	5732	2.4	4588	2.2	3592	2.0	2729	1.8	1989	1.6	-	-	-	-			
MT028	35	11865	2.1	10043	2.3	8407	2.3	6946	2.2	5648	2.2	4503	2.0	3498	1.9	2623	1.7			
	45	10654	2.7	8967	2.7	7457	2.6	6105	2.5	4907	2.4	3848	2.2	2919	2.0	2107	1.7			
	55	9318	3.3	7782	3.2	6408	3.0	5184	2.8	4101	2.6	3145	2.3	-	-	-	-			
MT 032	35	13402	2.7	11224	2.8	9297	2.8	7604	2.7	6126	2.5	4846	2.4	3747	2.2	2808	1.9			
	45	11896	3.3	9897	3.2	8133	3.1	6586	3.0	5239	2.8	4074	2.5	3072	2.3	2217	2.0			
	55	10356	3.9	8557	3.7	6976	3.5	5596	3.3	4398	3.0	3367	2.7	-	-	-	-			
MT 036	35	14732	3.2	12550	3.2	10580	3.1	8808	3.0	7223	2.8	5812	2.6	4565	2.4	3470	2.1			
	45	13230	3.8	11205	3.7	9379	3.5	7736	3.3	6266	3.1	4958	2.8	3800	2.6	2778	2.3			
	55	11593	4.4	9745	4.2	8080	4.0	6585	3.7	5249	3.4	4060	3.1	-	-	-	-			
MT 040	35	15880	3.3	13532	3.4	11412	3.4	9505	3.3	7799	3.1	6281	2.9	4938	2.6	3756	2.3			
	45	14580	4.1	12330	4.1	10298	4.0	8471	3.8	6837	3.5	5383	3.2	4096	2.9	2961	3.4			
	55	13201	5.0	11060	4.8	9128	4.5	7395	4.2	5844	3.9	4465	3.5	-	-	-	-			
MT 044	35	18952	3.3	15618	3.4	12731	3.4	10255	3.3	8154	3.1	6390	2.9	4928	2.6	3730	2.3			
	45	16799	4.1	13766	4.1	11154	4.0	8925	3.8	7041	3.6	5469	3.3	4171	2.9	3110	2.6			
	55	14488	5.0	11792	4.8	9486	4.6	7537	4.3	5904	3.9	4556	3.5	3454	3.1	-	-			
MT 050	35	21004	4.3	17285	4.2	14076	4.0	11337	3.8	9023	3.5	7093	3.2	5502	2.8	4209	2.5			
	45	18768	5.0	15330	4.8	12376	4.5	9865	4.2	7754	3.9	6001	3.5	4562	3.2	3397	2.8			
	55	16351	5.7	13225	5.4	10558	5.1	8306	4.7	6428	4.3	4883	3.8	3626	3.4	-	-			
MT 056	35	22746	4.2	19089	4.3	15839	4.3	12967	4.2	10446	4.0	8248	3.7	6345	3.3	4711	2.9			
	45	20247	5.3	16908	5.3	13945	5.1	11332	4.9	9042	4.5	7046	4.1	5319	3.7	3831	3.2			
	55	17557	6.5	14570	6.3	11929	5.9	9611	5.5	7586	5.0	5828	4.5	4310	3.9	-	-			
MT 064	35	26431	5.1	21999	5.2	18105	5.1	14709	4.8	11770	4.5	9249	4.2	7105	3.8	5298	3.3			
	45	23464	6.3	19424	6.1	15886	5.9	12810	5.6	10517	5.1	7885	4.7	5955	4.2	4329	3.6			
	55	20418	7.4	16814	7.1	13676	6.7	10964	6.2	8637	5.6	6658	5.0	4985	4.4	-	-			
MT 072	35	28327	6.3	23756	6.1	19700	5.8	16122	5.4	11288	5.1	10261	4.6	7907	4.2	5891	3.8			
	45	25039	7.2	20913	6.9	17261	6.5	14047	6.1	11286	5.6	8794	5.2	6684	4.7	4874	4.2			
	55	21716	8.4	18083	7.9	14884	7.4	12082	6.9	9644	6.3	7534	5.8	5718	5.2	-	-			
MT 080	35	32237	7.1	27044	6.9	22433	6.5	18364	6.1	14798	5.7	11696	5.2	9016	4.7	6718	4.2			
	45	28544	8.2	23845	7.8	19684	7.4	16021	6.9	12816	6.4	10030	5.8	7623	5.3	5555	4.7			
	55	24781	9.4	20632	8.9	16975	8.4	13772	7.8	10982	7.2	8566	6.5	6486	5.9	-	-			
MT 100	35	40729	7.0	33833	7.3	27804	7.3	22574	7.2	18077	6.9	14245	6.5	11013	6.0	8313	5.4			
	45	35608	8.5	29340	8.5	23881	8.3	19164	8.0	15123	7.5	11690	6.9	8802	6.3	6389	5.6			
	55	30527	10.2	24957	9.9	20136	9.4	16001	8.9	12483	8.2	9518	7.4	7040	6.6	-	-			
MT 125	35	52172	9.8	43467	9.8	35839	9.6	29206	9.2	23487	8.8	18599	8.2	14460	7.5	10991	6.8			
	45	45847	11.9	37991	11.6	31134	11.1	25195	10.5	20093	9.8	15744	9.1	12071	8.2	8992	7.4			
	55	39189	13.9	32276	13.3	26284	12.5	21131	11.7	16737	10.8	13022	9.8	9904	8.8	-	-			
MT 144	35	59695	11.0	49653	11.0	40879	10.8	33273	10.4	26738	9.8	21176	9.2	16489	8.5	12580	7.7			
	45	52221	13.3	43189	13.0	35330	12.4	28548	11.8	22746	11.0	17826	10.2	13690	9.3	10243	8.3			
	55	44365	15.6	36452	14.9	29620	14.1	237720	13.1	18811	12.1	14640	11.0	11165	9.8	-	-			
MT 160	35	65673	12.4	54628	12.3	44983	12.1	36629	11.6	29456	11.0	23357	10.3	18223	9.5	13945	7.7			
	45	59805	14.9	47803	14.5	39120	13.9	31630	13.2	25227	12.3	19801	11.4	15246	10.4	11453	9.3			
	55	49450	17.5	40641	16.7	33035	15.8	26525	14.7	21005	13.5	16367	12.3	12504	11.0	-	-			

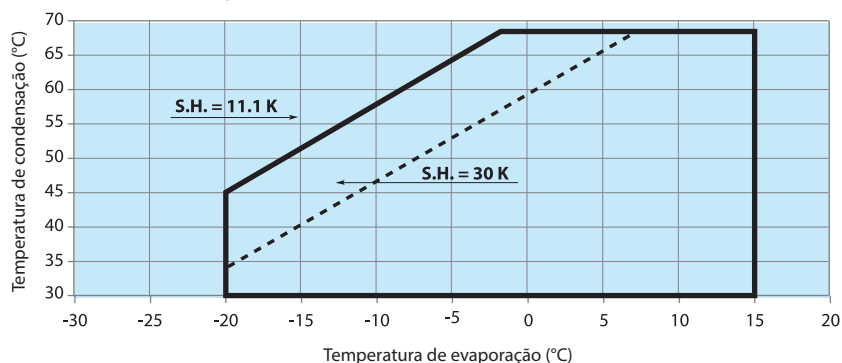
Legenda

T.E.: Temperatura de Evaporação (°C)
 T.C.: Temperatura de Condensação (°C)
 C.R.: Capacidade de Refrigeração (kcal/h)
 P.C.: Potência Consumida (kW)

Condições consideradas

(EN12900 HBP 10k)
 superaquecimento = 10k
 sub-resfriamento = 0k

Limites de aplicação



Observação:

SH = Superaquecimento máximo permitido

Compressores herméticos · MT · R402B

Modelo	T.E.	10			5		0		-5		-10		-15		-20		-25		-30	
	Tc	C.R.	P.C.	C.R.	P.C.	C.R.	P.C.	C.R.	P.C.	C.R.	P.C.	C.R.	P.C.	C.R.	P.C.	C.R.	P.C.	C.R.	P.C.	
MT 019	35	7283	1.5	6970	1.3	4494	1.2	3342	1.1	2399	0.8	1711	0.9	1316	0.8	878	0.7	447	0.1	
	45	5153	1.8	4479	1.5	3610	1.4	2763	1.3	2021	1.1	1447	1.0	1105	0.9	658	0.8	456	0.1	
	55	4517	2.1	3483	1.8	2810	1.6	2189	1.5	1604	1.2	1141	1.1	836	1.0	515	0.8	-	-	
MT 022	35	8892	1.9	6991	1.7	5722	1.7	4762	1.5	3586	1.4	2734	1.2	1947	1.0	1233	0.8	792	0.2	
	45	7464	2.3	5928	2.0	4824	1.9	3906	1.7	2977	1.4	2218	1.3	1519	1.1	913	0.9	681	0.2	
	55	5844	2.5	4793	2.3	3864	2.1	3049	1.9	2316	1.6	1656	1.4	1044	1.2	610	0.9	-	-	
MT028	35	11664	2.5	9236	2.2	7714	2.2	6346	2.2	5149	1.9	4112	1.8	3093	1.6	2110	1.4	1059	0.1	
	45	9972	3.1	7998	2.7	6692	2.6	5521	2.4	4447	2.2	3503	2.0	2603	1.8	1707	1.5	969	0.3	
	55	8172	3.6	6687	3.1	5572	2.9	4582	2.7	3653	2.4	2807	2.1	2004	1.9	1253	1.6	-	-	
MT 032	35	13008	3.1	10221	2.7	8415	2.7	6862	2.5	5500	2.4	4329	2.0	3261	1.9	2371	1.7	958	0.2	
	45	11052	3.7	8808	3.2	7270	3.0	5934	2.8	4736	2.6	3720	2.3	2765	2.0	1953	1.8	878	0.2	
	55	9168	4.2	7378	3.6	6063	3.4	4927	3.1	3906	2.8	3044	2.6	2234	2.1	1532	1.9	-	-	
MT 036	35	14892	3.5	11785	3.0	9778	2.9	8116	2.7	6638	2.5	5335	2.3	4089	2.0	2915	1.8	1267	0.1	
	45	12600	4.1	10154	3.6	8488	3.4	7053	3.2	5735	2.8	4551	2.6	3433	2.3	2368	2.0	1155	0.3	
	55	10416	4.8	8488	4.1	7079	3.8	5861	3.6	4723	3.2	3648	2.9	2647	2.6	1769	2.1	-	-	
MT 040	35	25996	3.8	12616	3.3	10603	3.3	8839	3.1	7229	2.9	5712	2.7	4318	2.5	3152	1.9	1267	0.4	
	45	13968	4.8	11119	4.1	9355	3.9	7714	3.6	6228	3.2	4876	2.9	3606	2.5	2564	2.1	1139	0.4	
	55	12024	5.4	9571	4.7	7967	4.4	6480	4.0	5118	3.6	3952	3.1	2822	2.6	1919	2.1	-	-	
MT 044	35	17964	4.3	14319	3.7	12156	3.5	10108	3.3	8142	3.1	6475	2.8	4876	2.4	3364	2.0	1704	0.4	
	45	15564	5.1	12409	4.4	10402	4.1	8632	3.8	6945	3.4	5392	3.0	3916	2.5	2683	2.1	1416	0.4	
	55	12840	5.5	10423	4.9	8632	4.5	7146	4.1	5743	3.7	4365	3.2	3085	2.6	2053	2.2	-	-	
MT 050	35	20304	4.6	16109	4.2	13353	4.0	11284	4.3	9019	3.7	7079	3.4	5325	3.0	3895	2.7	1560	0.0	
	45	17736	5.3	14024	4.8	11692	4.5	9540	3.8	7512	4.0	5799	3.6	4272	3.1	3018	2.7	1384	0.2	
	55	14796	6.1	11831	5.4	9675	5.0	7765	4.2	6011	4.2	4530	3.7	3292	3.2	2182	2.8	-	-	
MT 056	35	22365	5.4	17693	4.9	14948	4.7	12533	4.8	10247	4.3	8101	3.8	6011	3.4	4339	3.0	1811	0.1	
	45	19536	6.0	15474	5.5	12936	5.3	10645	4.8	8472	4.6	6553	4.1	4803	3.6	3297	3.0	1639	0.3	
	55	16308	5.1	13127	5.7	10841	5.9	8761	5.2	6821	4.9	5113	4.4	3689	3.8	2332	3.1	-	-	
MT 064	35	25680	6.4	20356	5.7	17151	5.4	14267	5.7	11584	4.9	9060	4.3	6545	3.8	5015	3.4	1613	0.4	
	45	22248	7.4	17621	6.5	14633	6.1	11945	5.1	9468	5.1	7224	4.5	5219	3.9	3756	3.4	1544	0.4	
	55	18720	8.4	14964	7.3	12311	6.8	9881	5.5	7672	5.4	5732	4.7	4135	4.0	2781	3.4	-	-	
MT 072	35	28320	7.3	22239	6.5	18612	6.1	15567	5.7	12487	5.2	10036	4.8	7461	4.3	5536	3.7	2108	0.7	
	45	24804	8.1	19556	7.2	16269	6.8	13328	6.3	10939	5.7	8230	5.2	6099	4.6	4411	4.0	1864	0.7	
	55	20736	9.1	16666	8.1	13751	7.5	11057	6.9	8947	6.2	6630	5.6	4984	4.9	3390	4.2	-	-	
MT 080	35	32352	8.2	25464	7.3	21228	6.9	17569	6.5	14329	6.1	11352	5.6	8663	4.9	6377	4.2	2566	0.8	
	45	27984	9.2	22110	8.2	18276	7.6	14938	7.1	11986	6.5	9288	5.8	6837	5.0	4953	4.3	2151	0.8	
	55	23064	10.4	18653	9.1	15356	8.4	12384	7.6	9793	6.8	7378	6.0	5232	5.4	3704	4.4	-	-	
MT 100	35	38868	9.1	30856	8.2	25707	7.9	20846	7.5	16460	7.0	12796	6.5	9236	5.9	7120	5.4	2184	0.6	
	45	32868	10.3	26316	9.3	21785	8.8	17750	8.2	14169	7.6	10939	6.8	7894	6.0	5779	5.5	2183	0.6	
	55	28224	11.6	22291	10.3	18312	9.6	15041	8.9	12038	8.1	9288	7.1	6708	6.2	809	5.6	-	-	
MT 125	35	51468	11.5	40480	10.2	33529	9.9	27090	8.8	21955	8.6	16821	8.0	13199	7.1	9948	6.7	3536	0.3	
	45	44100	13.2	34752	11.7	28410	11.2	22858	10.8	18049	9.5	13932	8.7	10928	7.8	8028	7.2	3173	0.6	
	55	36756	15.0	29102	13.2	23436	12.4	18834	11.9	14855	10.4	11248	9.4	8875	8.4	6455	7.5	-	-	
MT 144	35	58940	13.6	46298	12.0	38029	11.4	30843	10.7	24707	9.9	19479	9.2	15075	8.5	11413	7.7	4038	0.9	
	45	49920	15.6	39512	13.7	32215	12.8	25933	11.9	20562	10.9	16021	10.0	12220	9.1	9060	8.2	3520	1.0	
	55	40710	17.6	32710	15.4	26449	14.2	21117	13.0	16598	11.8	12814	10.7	9675	9.6	7084	8.5	-	-	
MT 160	35	64692	15.6	51084	13.8	42533	13.2	34778	12.6	27660	11.5	21362	10.6	16808	9.4	12740	8.8	4317	0.6	
	45	55392	17.7	43860	15.7	36083	14.8	29205	13.8	23083	12.5	17853	11.4	14110	10.1	10273	9.3	4078	0.8	
	55	49104	19.8	37461	17.5	29989	16.3	24045	14.9	18872	13.4	14499	12.2	11573	10.9	8137	9.6	-	-	

Legenda

T.E. = Temperatura de Evaporação (°C)
 T.C. = Temperatura de Condensação (°C)
 C.R. = Capacidade de Refrigeração (kcal/h)
 P.C. = Potência Consumida (kW)

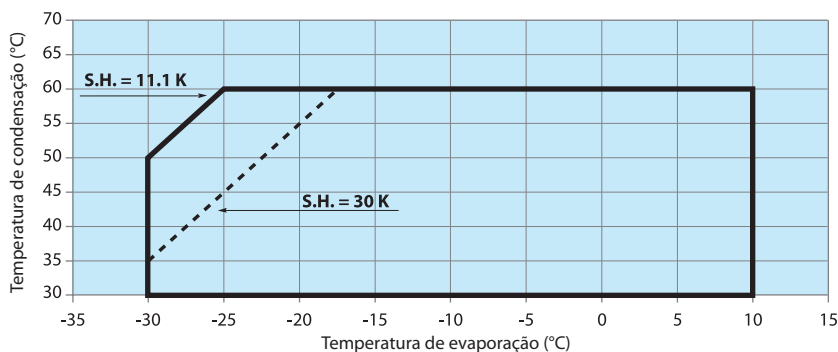
Condições Consideradas

(Em 12900 HBP 10K)
 Superaquecimento = 10K
 Sub-resfriamento = 0K

Observação: Para condições distintas das consideradas, a capacidade e consumo mudam. Neste caso, consulte nosso SAC 0800 701 0054.

Atenção: Para este tipo de fluido, utilize componentes para R-404A

Limites de aplicação



Observação:

SH = Superaquecimento máximo permitido

Compressores herméticos · MTZ · R134a

Modelo	Te	+20		+15		+10		+5		0		-5		-10		-15	
	Tc	C.R.	P.C.	C.R.	P.C.	C.R.	P.C.	C.R.	P.C.	C.R.	P.C.	C.R.	P.C.	C.R.	P.C.	C.R.	P.C.
MTZ 019	35	6433	0.9	5219	0.9	4184	0.9	3312	0.9	2587	0.9	1994	0.8	1518	0.8	1141	0.7
	45	5699	1.2	4576	1.2	3625	1.1	2827	1.1	2167	1.0	1630	0.9	1201	0.8	862	0.7
	55	4899	1.5	3881	1.4	3023	1.3	2309	1.2	1726	1.1	1256	0.9	884	0.8	594	0.7
MTZ 022	35	7961	1.2	6503	1.2	5245	1.2	4171	1.2	3265	1.1	2510	1.1	1890	1.0	1387	0.9
	45	7065	1.5	5734	1.5	4591	1.4	3620	1.4	2804	1.3	2126	1.2	1572	1.0	1123	0.9
	55	6056	1.8	4867	1.7	3854	1.6	3000	1.5	2289	1.3	1704	1.2	1229	1.0	848	0.9
MTZ028	35	9573	1.6	7981	1.7	6574	1.7	5339	1.6	4263	1.5	3334	1.4	2537	1.3	1862	1.1
	45	8562	2.0	7096	2.0	5804	1.9	4670	1.8	3685	1.7	2833	1.5	2104	1.3	1483	1.1
	55	7439	2.4	6114	2.3	4951	2.2	3935	2.0	3054	1.8	2296	1.6	1647	1.3	1097	1.1
MTZ 032	35	10728	1.9	8833	2.0	7176	2.0	5737	1.9	4502	1.8	3448	1.6	2562	1.5	1824	1.3
	45	9548	2.3	7847	2.3	6364	2.2	5082	2.1	3982	2.0	3049	1.8	2263	1.6	1608	1.3
	55	8150	2.7	6665	2.6	5379	2.5	4275	2.3	3335	2.1	2542	1.9	1879	1.6	1328	1.4
MTZ 036	35	12225	2.4	10197	2.4	8414	2.4	6859	2.3	5513	2.1	4359	1.9	3379	1.7	2555	1.5
	45	10875	2.8	9011	2.8	7376	2.6	5952	2.5	4724	2.3	3672	2.0	2778	1.8	2025	1.5
	55	9427	3.2	7746	3.1	6278	2.9	5007	2.6	3915	2.4	2983	2.1	2193	1.8	1530	1.5
MTZ 040	35	13624	2.9	11487	2.9	9602	2.8	7949	2.6	6511	2.4	5269	2.2	4206	1.9	3304	1.7
	45	12122	3.3	10115	3.2	8345	3.0	6796	2.8	5449	2.6	4287	2.3	3292	2.0	2447	1.7
	55	10641	3.7	8778	3.5	7140	3.3	5710	3.0	4471	2.6	3404	2.3	2493	1.9	1719	1.6
MTZ 044	35	16446	2.7	13357	2.7	10711	2.6	8471	2.5	6597	2.4	5053	2.2	3801	2.0	2804	1.8
	45	14503	3.3	11689	3.2	9291	3.0	7272	2.8	5593	2.6	4217	2.4	3107	2.1	2224	1.9
	55	12406	3.8	9900	3.6	7783	3.3	6016	3.0	4563	2.7	3385	2.4	2447	2.1	1712	1.9
MTZ 050	35	18205	3.2	14939	3.1	12113	3.0	9690	2.9	7635	2.7	5912	2.5	4486	2.3	3323	2.1
	45	16122	3.8	13145	3.6	10578	3.4	8386	3.2	6535	3.0	4988	2.7	3711	2.4	2670	2.1
	55	13847	4.3	11192	4.1	8918	3.8	6991	3.5	5377	3.1	4040	2.8	2945	2.5	2057	2.1
MTZ 056	35	19358	3.5	16035	3.5	13129	3.4	10608	3.2	8440	3.0	6595	2.8	5041	2.5	3747	2.2
	45	17206	4.1	14172	4.0	11528	3.8	9240	3.5	7279	3.3	5612	3.0	4208	2.6	3038	2.3
	55	14835	4.7	12126	4.5	9776	4.2	7756	3.8	6034	3.4	4579	3.1	3360	2.7	2347	2.3
MTZ 064	35	22330	4.2	18652	4.2	15403	4.0	12552	3.8	10071	3.7	7929	3.3	6096	2.9	4544	2.6
	45	19913	4.9	16551	4.7	13588	4.5	10994	4.2	8739	3.9	6793	3.5	5127	3.1	3711	2.7
	55	17227	5.6	14220	5.3	11582	4.9	9281	4.5	7289	4.1	5577	3.6	4114	3.2	2872	2.7
MTZ 072	35	23987	5.0	20172	4.8	16777	4.6	13777	4.3	11142	3.9	8845	3.6	6859	3.2	5156	2.8
	45	21546	5.7	18023	5.4	14892	5.0	12127	4.7	9700	4.2	7586	3.8	5754	3.4	4179	3.0
	55	18792	6.4	15595	6.0	12764	5.5	10270	5.0	8087	4.5	6187	4.0	4545	3.5	3132	3.0
MTZ 080	35	27048	6.0	22780	5.7	18980	5.4	15616	5.0	12660	4.6	10081	4.2	7850	3.8	5934	3.3
	45	24187	6.7	20271	6.3	16789	5.9	13711	5.4	11007	4.9	8647	4.4	6602	3.9	4841	3.5
	55	21031	7.4	17509	6.9	14388	6.3	11637	5.8	9226	5.2	7127	4.6	5309	4.1	3744	3.5
MTZ 100	35	34498	5.4	28435	5.5	23146	5.5	18569	5.3	14648	5.0	11321	4.6	8531	4.2	6218	3.7
	45	30284	6.4	24767	6.4	19968	6.2	15831	5.8	12297	5.4	9305	4.9	6799	4.4	4718	3.8
	55	25714	7.5	20805	7.2	16562	6.8	12928	6.3	9843	5.7	7249	5.1	5088	4.4	3303	3.7
MTZ 125	35	42774	7.3	35250	7.1	28691	6.8	23023	6.5	18172	6.0	14064	5.5	10624	4.9	7780	4.3
	45	37359	8.4	30570	8.0	24675	7.5	19601	7.0	15271	6.4	11616	5.7	8559	5.0	6029	4.3
	55	31491	9.4	25524	8.8	20379	8.1	15983	7.4	12261	6.6	9140	5.8	6549	5.0	4416	4.2
MTZ 144	35	46808	7.7	39338	8.0	32727	8.0	26916	7.9	21846	7.5	17458	7.0	13693	6.5	10494	5.8
	45	41801	9.4	34959	9.4	28917	9.1	23615	8.7	18994	8.2	14996	7.6	11563	6.8	8636	6.1
	55	36212	11.0	30075	10.7	24676	10.2	19958	9.6	15859	8.8	12324	7.9	9295	7.0	6715	6.1
MTZ 160	35	51479	9.9	43359	9.7	36157	9.4	29813	9.0	24264	8.4	19448	7.8	15301	7.0	11766	6.3
	45	46121	11.4	38644	11.0	32023	10.5	26199	9.8	21109	9.1	16691	8.3	12885	7.4	9629	6.5
	55	40112	13.0	33355	12.3	27393	11.5	22166	10.6	17161	9.6	13669	8.6	10278	7.5	7377	6.5

Legenda:

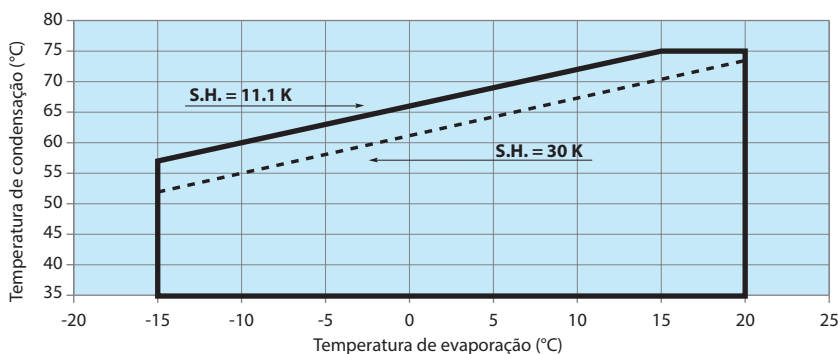
T.E: Temperatura de Evaporação (°C)
 T.C: Temperatura de Condensação (°C)
 C.R: Capacidade de Refrigeração (kcal/h)
 P.C: Potência Consumida (kW)

Condições consideradas

(EN12900 HBP 10k)
 superaquecimento = 10k
 sub-resfriamento = 0k

Observação: Para condições distintas das consideradas, a capacidade e consumo mudam. Neste caso, consulte nosso SAC (0800 701 0054).

Limites de aplicação



Observação:

SH = Superaquecimento máximo permitido

Compressores herméticos · MTZ · R404A/R507

Modelo	T.E.	10		5		0		-5		-10		-15		-20		-25		-30	
	Tc	C.R.	P.C.	C.R.	P.C.	C.R.	P.C.	C.R.	P.C.	C.R.	P.C.	C.R.	P.C.	C.R.	P.C.	C.R.	P.C.	C.R.	P.C.
MTZ 019	35	6740	1.7	5508	1.7	4432	1.6	3499	1.6	2698	1.5	2016	1.4	1442	1.3	963	1.1	570	0.9
	45	5652	2.0	4572	1.9	3634	1.8	2824	1.8	2132	1.6	1546	1.5	1054	1.3	644	1.1	303	0.8
	55	4463	2.2	3551	2.1	2767	2.0	2097	1.9	1531	1.7	1056	1.5	660	1.2	334	0.9	-	-
MTZ 022	35	8405	2.0	6892	2.0	5578	1.9	4448	1.8	3478	1.7	2676	1.6	2002	1.4	1448	1.3	998	1.1
	45	7156	2.4	5826	2.3	4678	2.2	3694	2.0	2861	1.9	2162	1.7	1579	1.5	1100	1.3	706	1.1
	55	5685	2.7	4564	2.6	3606	2.4	2795	2.2	2117	2.0	1553	1.8	1089	1.5	710	1.3	-	-
MTZ028	35	10213	2.7	8493	2.6	6984	2.5	5669	2.4	4533	2.2	3560	2.1	2733	1.9	2039	1.7	1458	1.4
	45	8697	3.1	7190	3.0	5873	2.8	4730	2.7	3745	2.5	2902	2.2	2185	2.0	1578	1.7	1067	1.4
	55	7002	3.6	5728	3.4	4624	3.1	3673	2.9	2859	2.6	2167	2.3	1580	2.0	1084	1.7	-	-
MTZ 032	35	11906	3.0	9788	2.9	7948	2.8	6366	2.7	5019	2.5	3885	2.3	2942	2.0	2169	1.8	1543	1.5
	45	9839	3.5	8056	3.4	6521	3.2	5203	3.0	4085	2.7	3144	2.4	2358	2.2	1705	1.8	1163	1.5
	55	7757	4.0	6311	3.8	5073	3.5	4017	3.2	3126	2.9	2373	2.6	1740	2.2	1204	1.8	-	-
MTZ 036	35	13897	3.7	11446	3.5	9310	3.3	7464	3.1	5884	2.8	4545	2.6	3422	2.3	2493	2.0	1732	1.7
	45	11554	4.2	9447	4.0	7621	3.7	6051	3.4	4715	3.0	3587	2.7	2641	2.4	1856	2.0	1207	1.7
	55	9179	4.7	7422	4.4	5913	4.0	4628	3.6	3543	3.2	2632	2.8	1872	2.4	1239	2.0	-	-
MTZ 040	35	15663	4.3	12930	4.1	10542	3.8	8474	3.5	6698	3.2	5190	2.9	3920	2.6	2865	2.3	1997	1.9
	45	13027	4.8	10678	4.5	8640	4.1	6885	3.8	5386	3.4	4117	3.1	3053	2.7	2166	2.3	1431	1.9
	55	10348	5.4	8397	4.9	6717	4.5	5285	4.1	4073	3.6	3057	3.2	2207	2.8	1500	2.3	-	-
MTZ 044	35	17793	4.6	14599	4.4	11834	4.2	9465	4.0	7455	3.7	5771	3.4	4378	3.0	3242	2.6	2329	2.3
	45	14574	5.2	11825	4.9	9457	4.6	7438	4.2	5732	3.9	4306	3.5	3127	3.1	2161	2.6	1373	2.3
	55	11132	5.7	8894	5.3	6988	4.9	5381	4.4	4042	3.9	2935	3.4	2028	2.9	1290	2.5	-	-
MTZ 050	35	19995	5.3	16515	5.1	13485	4.9	10872	4.6	8640	4.2	6753	3.9	5178	3.5	3880	3.1	2824	2.6
	45	16450	6.0	13451	5.7	10852	5.3	8618	4.9	6717	4.5	5111	4.0	3769	3.5	2655	3.1	1737	2.6
	55	12639	6.6	10194	6.2	8096	5.6	6312	5.1	4807	4.5	3549	4.0	2504	3.4	1640	2.9	-	-
MTZ 056	35	21686	6.1	18041	5.8	14836	5.5	12040	5.2	9622	4.8	7549	4.3	5791	3.8	4316	3.4	3095	2.9
	45	17922	6.8	14778	6.5	12022	6.0	9624	5.5	7550	5.0	5773	4.5	4259	3.9	2980	3.4	1905	2.9
	55	13846	7.6	11278	7.0	9045	6.4	7116	5.8	5460	5.1	4048	4.5	2849	3.8	1836	3.2	-	-
MTZ 064	35	24025	7.0	20059	6.7	16564	6.3	13508	5.9	10859	5.4	8581	4.9	6643	4.3	5012	3.8	3655	3.2
	45	19967	7.7	16531	7.3	13513	6.8	10878	6.2	8594	5.6	6631	5.0	4953	4.4	3531	3.8	2330	3.2
	55	15526	8.5	12702	7.8	10238	7.2	8102	6.5	6262	5.7	4687	5.0	3345	4.3	2205	3.6	-	-
MTZ 072	35	26537	8.0	22188	7.6	18362	7.1	15023	6.6	12133	6.0	9654	5.4	7549	4.9	5781	4.3	4314	3.8
	45	22121	8.9	18342	8.3	15028	7.7	12140	7.0	9644	6.4	7501	5.7	5676	5.1	4130	4.5	2831	3.9
	55	17289	9.7	14168	8.9	11450	8.1	9098	7.3	7077	6.5	5352	5.8	3887	5.1	2646	4.4	-	-
MTZ 080	35	29463	9.5	24706	8.9	20509	8.3	16832	7.7	13637	7.0	10886	6.3	8539	5.7	6560	5.0	4908	4.3
	45	24589	10.4	20470	9.7	16844	9.1	13674	8.2	10919	7.4	8544	6.6	6510	5.8	4780	5.1	3317	4.4
	55	19203	11.3	15819	10.4	12860	9.4	10288	8.5	8066	7.6	6158	6.7	4527	5.8	3138	5.0	-	-
MTZ 100	35	36441	8.7	30173	8.5	24688	8.2	19925	7.9	15824	7.5	12326	7.0	9370	6.4	6898	5.7	4847	4.9
	45	30101	10.1	24706	9.7	20013	9.2	15963	8.7	12495	8.1	9551	7.4	7069	6.5	4990	5.6	3256	4.6
	55	23620	11.4	19132	10.8	15266	10.1	11963	9.3	9163	8.4	6806	7.5	4832	6.4	3182	5.3	-	-
MTZ 125	35	44274	11.1	36942	10.9	30516	10.6	24924	10.1	20097	9.5	15963	8.9	12453	8.2	9498	7.3	7026	6.5
	45	37147	13.3	30745	12.7	25165	12.1	20336	11.3	16189	10.4	12652	9.5	9656	8.5	7131	7.5	5008	6.4
	55	29600	15.2	24190	14.3	19520	13.3	15516	12.2	12111	11.0	9232	9.8	6813	8.6	4781	7.3	-	-
MTZ 144	35	51871	14.3	43276	13.4	35756	12.6	29227	11.8	23606	11.0	18805	10.2	14744	9.4	11337	8.5	8501	7.5
	45	43588	15.9	36080	14.9	29551	13.9	23915	12.9	19089	11.9	14988	10.9	11528	9.8	8624	8.7	6196	7.4
	55	34770	17.6	28427	16.4	22963	15.2	18296	14.0	14340	12.7	11012	11.3	8228	9.9	5905	8.4	-	-
MTZ 160	35	56299	16.1	47005	15.3	38876	14.5	31818	13.6	25739	12.6	20550	11.6	16157	10.5	12470	9.5	9398	8.4
	45	47128	18.4	39040	17.3	32008	16.1	25941	14.8	20747	13.5	16334	12.2	12612	10.9	9490	9.6	6878	8.4
	55	37700	20.4	30866	18.9	24979	17.3	19951	15.8	15688	14.2	12101	12.6	9097	11.1	6588	9.6	-	-

Legenda:

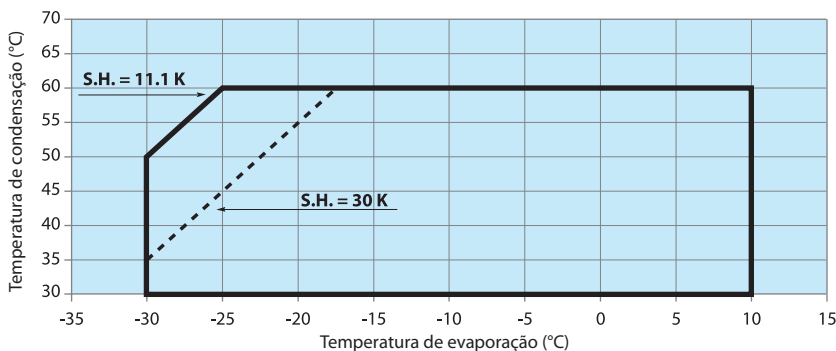
T.E: Temperatura de Evaporação (°C)
 T.C: Temperatura de Condensação (°C)
 C.R: Capacidade de Refrigeração (kcal/h)
 P.C: Potência Consumida (kW)

Condições consideradas

(EN12900 HBP 10k)
 superaquecimento = 10k
 sub-resfriamento = 0k

Observação: Para condições distintas das consideradas, a capacidade e consumo mudam. Neste caso, consulte nosso SAC 0800 701 0054.

Limites de aplicação



Observação:

SH = Superaquecimento máximo permitido

Compressores herméticos · MTZ · R407C

Modelo	T.E.	+15			+10			+5			0		-5		-10		-15	
		C.R.	P.C.	C.R.	P.C.	C.R.	P.C.	C.R.	P.C.	C.R.	P.C.	C.R.	P.C.	C.R.	P.C.	C.R.	P.C.	
MTZ 019	35	7714	1.2	6225	1.2	4953	1.2	3881	1.2	2989	1.1	2259	1.0	1674	1.0			
	45	6441	1.5	5154	1.5	4061	1.4	3147	1.3	2391	1.3	1775	1.2	1282	1.0			
	55	5128	1.8	4070	1.7	3184	1.6	2453	1.5	1859	1.4	-	-	-	-			
MTZ 022	35	9207	1.6	7497	1.6	6019	1.6	4754	1.5	3685	1.4	2794	1.3	2060	1.2			
	45	7784	2.0	6290	1.9	5005	1.9	3909	1.7	2986	1.6	2217	1.4	1584	1.3			
	55	6293	2.4	5043	2.3	3980	2.1	3083	1.9	2334	1.7	-	-	-	-			
MTZ028	35	11431	2.1	9378	2.1	7584	2.1	6031	2.0	4699	1.9	3569	1.7	2623	1.5			
	45	9768	2.6	7957	2.6	6380	2.4	5017	2.3	3849	2.1	2858	1.8	2026	1.6			
	55	7994	3.2	6459	3.0	5130	2.7	3991	2.5	3021	2.2	-	-	-	-			
MTZ 032	35	12746	2.4	10490	2.4	8510	2.4	6786	2.3	5299	2.1	4029	1.9	2957	1.7			
	45	10940	3.0	8941	2.9	7191	2.8	5669	2.6	4358	2.3	3237	2.1	2285	1.8			
	55	8999	3.6	7295	3.4	5811	3.1	4527	2.8	3426	2.5	-	-	-	-			
MTZ 036	35	14195	2.8	11767	2.8	9626	2.8	7755	2.7	6131	2.5	4737	2.3	3552	2.0			
	45	12285	3.5	10129	3.4	8231	3.2	6572	3.0	5135	2.7	3896	2.4	2839	2.1			
	55	11493	4.8	9493	4.5	7732	4.2	6192	3.9	4852	3.5	-	-	-	-			
MTZ 040	35	15752	3.2	13139	3.3	10828	3.2	8796	3.1	7027	2.9	5498	2.6	4192	2.4			
	45	13735	4.0	11408	3.9	9352	3.7	7547	3.5	5972	3.2	4608	2.9	3438	2.5			
	55	11493	4.8	9493	4.5	7732	4.2	6192	3.9	4852	3.5	-	-	-	-			
MTZ 044	35	18891	3.2	15406	3.2	12387	3.2	9797	3.1	7601	2.9	5759	2.7	4236	2.4			
	45	16548	4.0	13415	3.9	10709	3.8	8396	3.5	6437	3.2	4796	2.9	3436	2.6			
	55	13829	4.8	11097	4.6	8754	4.2	6766	3.9	5093	3.4	-	-	-	-			
MTZ 050	35	20867	3.7	17097	3.8	13821	3.7	11001	3.5	8599	3.3	6575	3.0	4890	2.7			
	45	18296	4.6	14905	4.5	11966	4.3	9442	4.0	7296	3.7	5487	3.3	3980	2.9			
	55	15344	5.5	12384	5.2	9835	4.8	7660	4.4	5822	3.9	-	-	-	-			
MTZ 056	35	23281	4.4	19156	4.4	15560	4.3	12455	4.1	9798	3.8	7550	3.4	5671	3.1			
	45	20431	5.4	16718	5.2	13489	4.9	10707	4.6	8330	4.2	6319	3.7	4632	3.3			
	55	17181	6.3	13938	5.9	11136	5.5	8734	5.0	6694	4.4	-	-	-	-			
MTZ 064	35	25651	5.1	21176	5.0	17267	4.9	13881	4.6	10976	4.3	8509	3.9	6439	3.4			
	45	22519	6.1	18491	5.9	14980	5.5	11944	5.1	9342	4.7	7131	4.2	5270	3.7			
	55	18980	7.1	15461	6.8	12410	6.2	9787	5.6	7549	5.0	-	-	-	-			
MTZ 072	35	28569	5.9	23664	5.8	19368	5.6	15636	5.2	12425	4.8	9688	4.4	7382	3.9			
	45	25099	7.0	20682	6.7	16821	6.3	13472	5.8	10592	5.3	8136	4.7	6059	4.1			
	55	21199	8.1	17338	7.6	13981	7.0	11084	6.3	8602	5.6	-	-	-	-			
MTZ 080	35	32072	6.9	26651	6.7	21891	6.4	17746	6.0	14166	5.5	11106	5.0	8518	4.4			
	45	28188	8.1	23304	7.7	19024	7.2	15301	6.7	12087	6.0	9336	5.4	7001	4.7			
	55	23861	9.3	19591	8.7	15867	8.0	12642	7.2	9867	6.4	-	-	-	-			
MTZ 100	35	39799	7.4	33420	7.5	27687	7.5	22568	7.2	18027	6.8	14034	6.3	10543	5.7			
	45	34622	9.1	28897	9.0	23750	8.6	19147	8.1	15056	7.5	11439	6.8	8266	6.0			
	55	28938	10.9	23959	10.3	19490	9.6	15496	8.8	11945	7.9	-	-	-	-			
MTZ 125	35	51668	9.8	43089	9.8	35540	9.6	28947	9.2	23240	8.6	18346	7.9	14191	7.1			
	45	45090	11.9	37368	11.5	30585	11.0	24667	10.3	19544	9.5	15142	8.6	11393	7.6			
	55	37836	14.0	31095	13.2	25198	12.3	20074	11.2	15653	10.1	-	-	-	-			
MTZ 144	35	57096	11.6	47727	11.5	39469	11.1	32246	10.6	25980	9.9	20595	9.1	16013	8.2			
	45	50069	13.8	41620	13.3	34185	12.6	27685	11.8	22046	10.9	17191	9.8	13044	8.7			
	55	42255	16.1	34859	15.1	28375	14.1	22728	12.9	17845	11.6	-	-	-	-			
MTZ 160	35	63565	13.7	53253	13.5	44151	13.0	36175	12.3	29243	11.5	23271	10.5	18179	9.5			
	45	56013	16.1	46698	15.5	38484	14.6	31291	13.6	25037	12.5	19640	11.3	15018	10.1			
	55	47523	18.6	39345	17.5	32159	116.2	25892	14.8	20455	13.4	-	-	-	-			

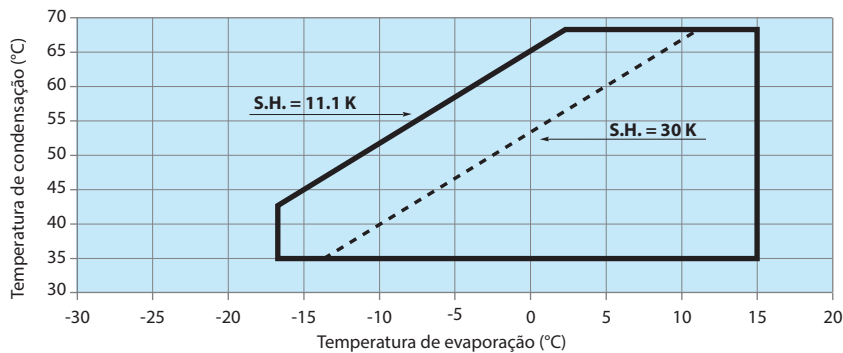
Legenda:

T.E: Temperatura de Evaporação (°C)
 T.C: Temperatura de Condensação (°C)
 C.R: Capacidade de Refrigeração (kcal/h)
 P.C: Potência Consumida (kW)

Condições consideradas

(EN12900 HBP 10k)
 superaquecimento = 10k
 sub-resfriamento = 0k

Limites de aplicação



Observação:

SH = Superaquecimento máximo permitido